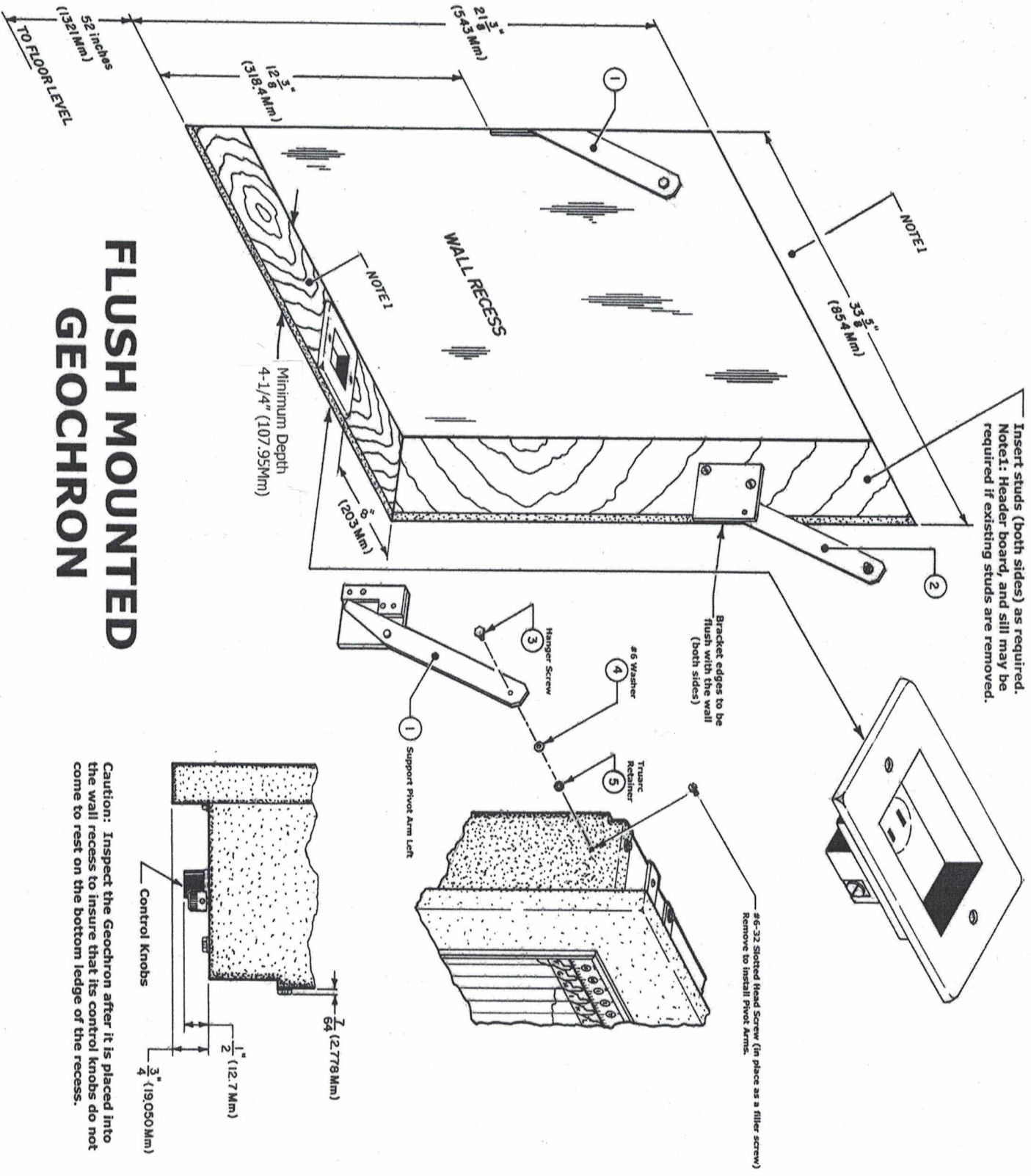


FLUSH MOUNTED GEOCHRON



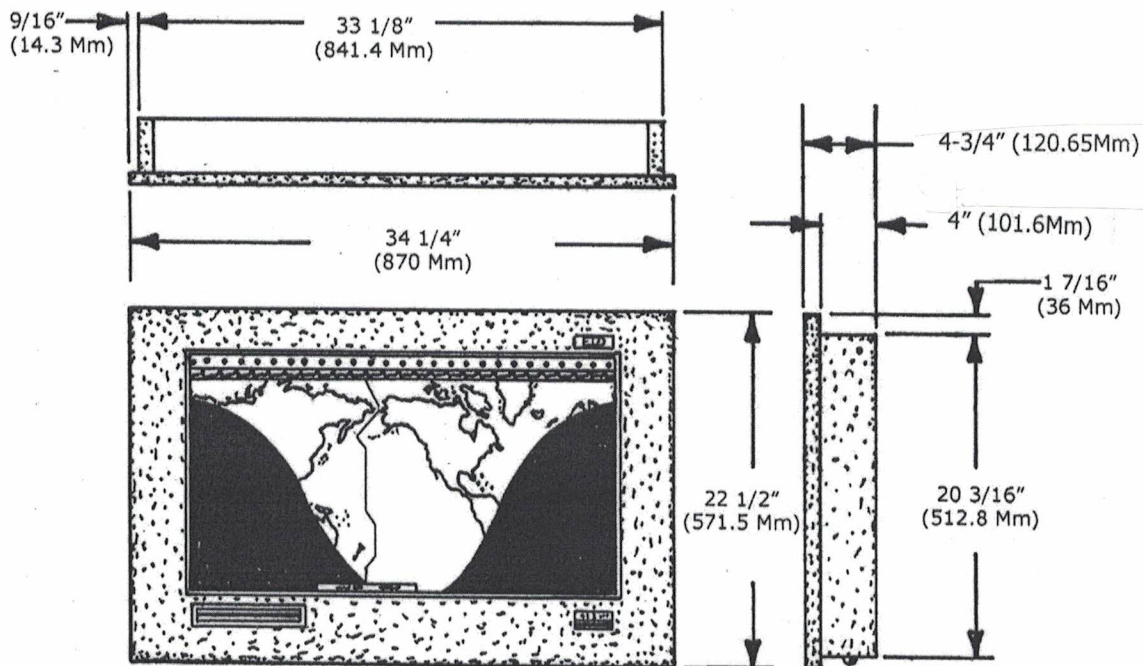
FLUSH MOUNTED GEOCHRON:

Flush Mounting a Geochron requires special "flush mount brackets" and a recess in the wall as shown on the opposite page. The recess must be the exact size indicated. The 12 3/8" distance from the bottom of the opening and the bottom edge of the mounting bracket is critical and must be exact. The front edge of the mounting bracket must be flush with the surface of the wall. Two studs must be fastened at the sides of the opening for secure mounting of the brackets. The minimum depth of 4 1/4" is essential to prevent pressure on the back of the Geochron causing damage to the map and preventing the Geochron from operating correctly. Vent holes at the top of the opening allow any heat produced by the lights to escape.

A shoulder screw and washer, in both mounting bracket arms, are used to fasten Geochron to the mounting bracket as indicated. The recessed electrical outlet must be placed so that Geochron's electric cord and plug do not interfere with control knobs (8" from the right side of recess as shown). Leviton 689-W 15Amp 1 Gang Recessed Duplex Receptable, Residential Grade is recommended.

The flush mount brackets enable you to swing the Geochron out of the recess to access to the setting knobs. When returning the unit into the recess, gently push the top edge first, and then the bottom edge of Geochron. When pulling the unit out, pull out the bottom edge first, then the top edge.

CAUTION: Inspect the Geochron after it is placed into the wall to ensure that its control knobs do not rest on the bottom ledge of the recess.



GEOCHRON DIMENSIONAL OUTLINE

NOTE: Outside dimensions of Boardroom Model 24 5/16" x 36 3/16".